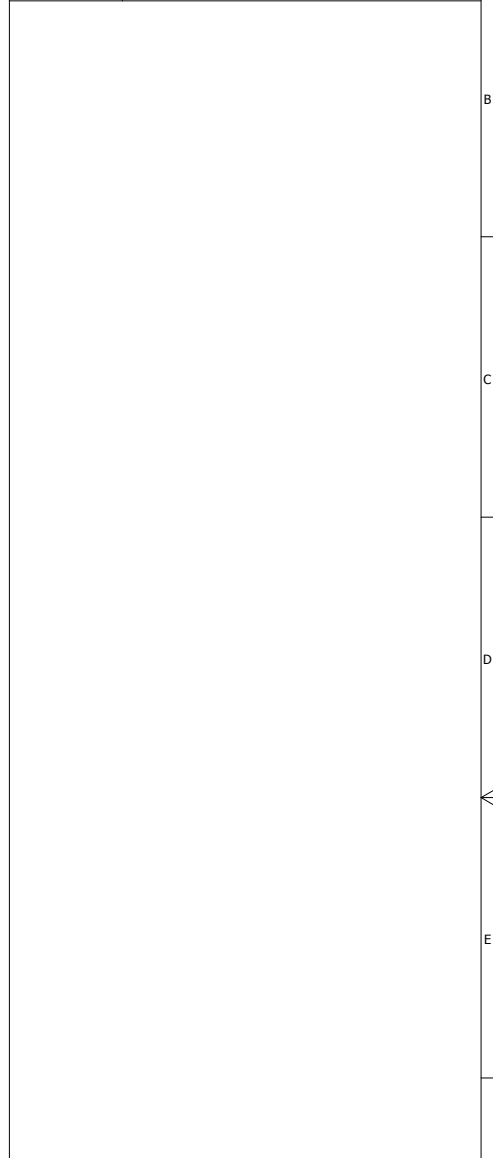
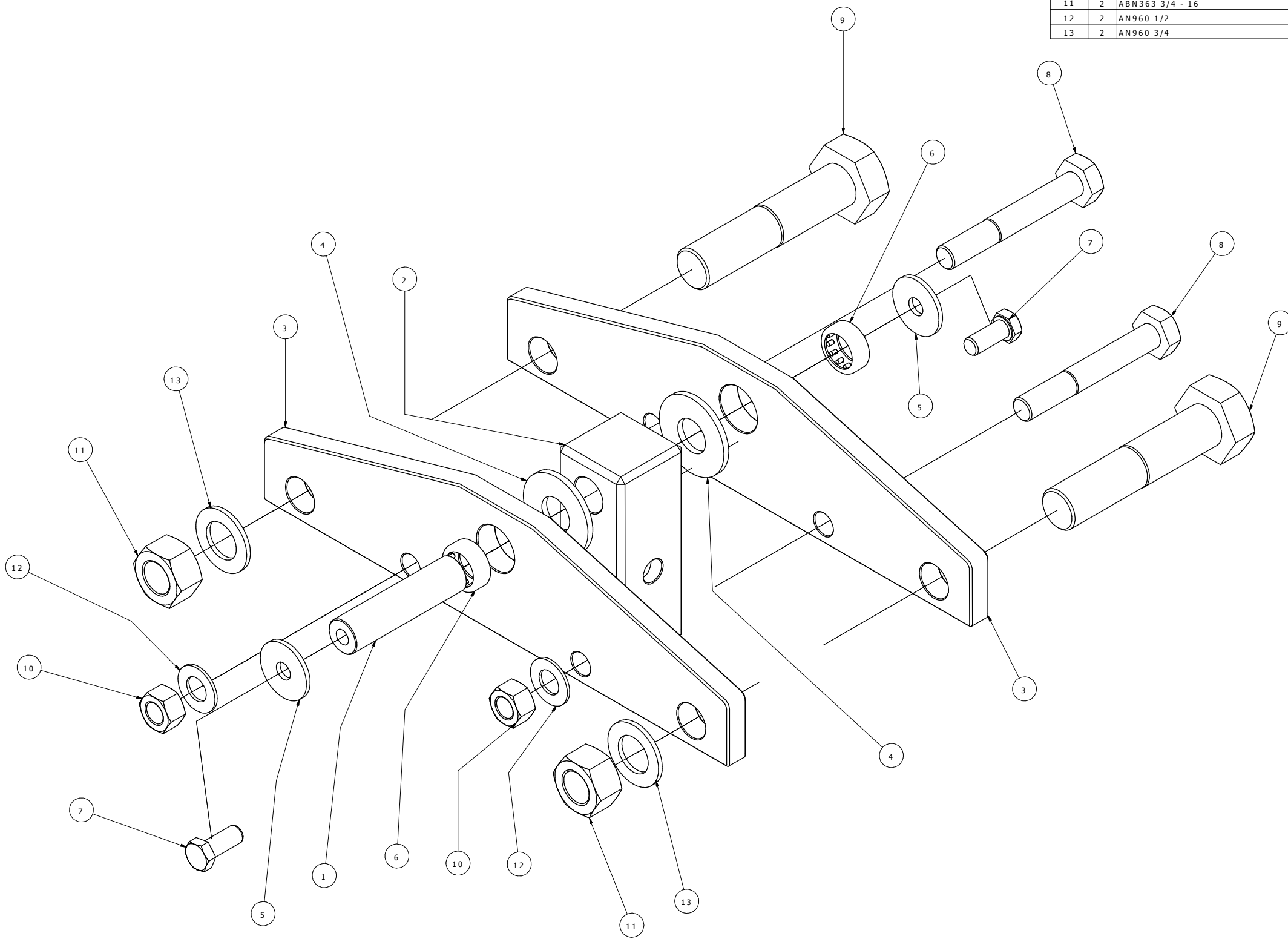


Parts List		
ITEM	QTY	DESCRIPTION
1	1	Rotor Head Pivot Shaft
2	1	Main Rotor Shaft Hub
3	2	Hub Side Pl
4	2	Pivot Inner Washers
5	2	Pivot Outer Washers
6	2	Torrington Needle Roller Bearing
7	2	AN6-7A
8	2	AN8-33A
9	2	AN12-33A
10	2	AN363 1/2 - 20
11	2	ABN363 3/4 - 16
12	2	AN960 1/2
13	2	AN960 3/4

REFERENCE DRAWINGS	
2006-02-19	ROTOR GRIP DETAILS
2006-03-02	BLADE GRIP DETAILS
2006-03-04	BLADE GRIP ASSEMBLY PARTS DETAILS
2006-03-01	MK-5 GENERAL ARRANGEMENT



GENERAL TOLERANCES - ALL SIZES		± mm					
ANNOTATION	DIMENSIONS FROM INCLUDED	CAST		FABRICATED		MACHINED	
		Decimal	Whole	Decimal	Whole	1st DEC	2nd DEC
LINER & CYLINDRICAL (mm)	0 - 50	1.0	2.0	0.5	1.0	0.1	0.05
	50 - 250	1.5	2.5	1.0	1.5	0.2	0.12
	251 - 500	2.0	3.0	1.5	2.0	0.4	0.2
	501 - 1000	2.5	3.5	2.0	2.5	0.6	0.3
ANGULAR SURFACE TEXTURE FLATNESS	1000 +	3.0	5.0	2.5	3.0	1.0	0.5
	OTHERWISE	1.0	3.0	1.0	2.0	0.1	0.05

REV	DESCRIPTION	DATE	DRN	CHK'D	APP'D
E					
D					
C					
B					
A					

CAD FILE No: MK-5 ROTOR HEAD		LOC No:	SCALE
DRN: KTC	DATE 03-06	PROJECT No: 2006	1:2
CHK'D:	DATE		
APP'D:	DATE		

TITLE: MK-5 ROTOR HEAD GRIP PARTS ASSEMBLY DETAILS			
VENDOR DWG No	PROP ENG DWG No	SHT	REV
	2006-03-03	1 / 1	A

DO NOT SCALE